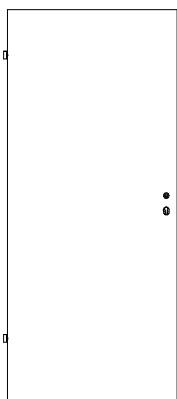
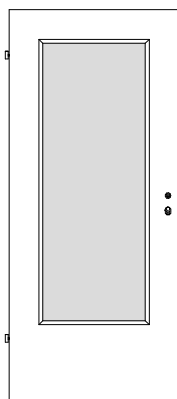




Weißlack Rundkanten-Türen RR



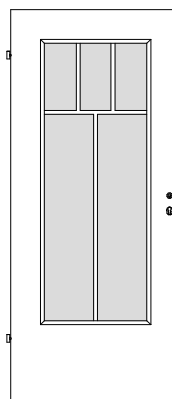
RR/01



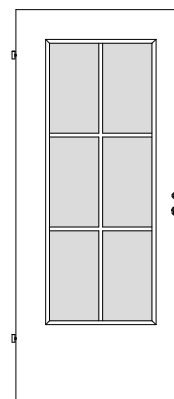
RR/LA 1



RR/LA 2



RR/SP5



RR/SP6

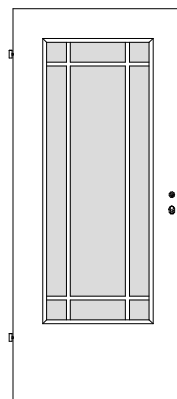
Türstärke ca. 40/46 mm,
Rahmen Massivholz bzw.
MDF mit Schlossverstärkung,
unten doppelter Rahmen

Mittellage siehe unten,
Deck aus MDF
Überschlag *Rundkante*

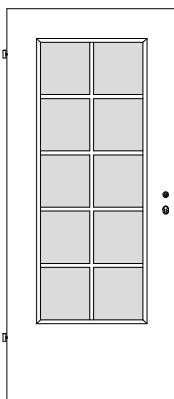
Oberfläche Weißlack

Marken-BB-Schloss mit
silberlack Stulp und Bänder
V0020 vernickelt
(bei Vollspan mit Bänder
V0026 WF vernickelt)

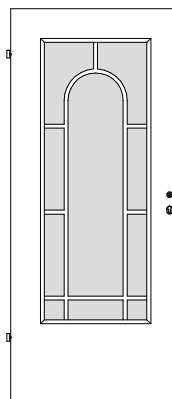
Schalldämmwert $R_{w,P}$
nach DIN 52210



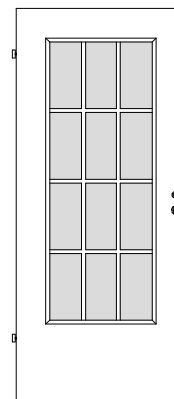
RR/SJ9



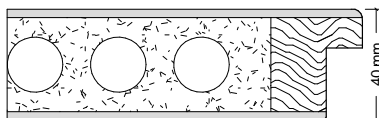
RR/SP10



RR/SP10R



RR/SP12



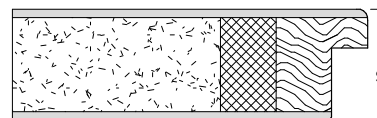
RR/01 (Klima I)

$R_{w,P}$ 25 dB



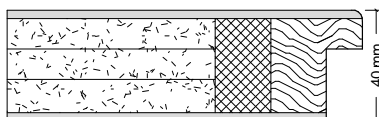
RV/01 (Klima I)

$R_{w,P}$ 27 dB



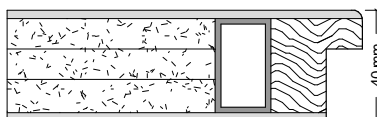
RV/1S (Klima II)

$R_{w,P}$ 32 dB



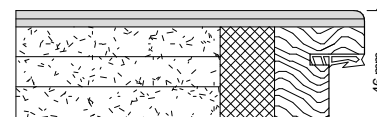
RV/3S (Klima II)

$R_{w,P}$ 37 dB



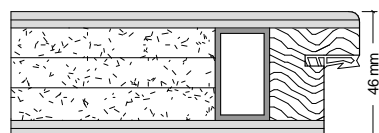
RV/3S-K3 (Klima III)

$R_{w,P}$ 37 dB



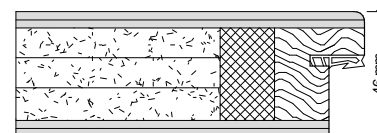
RM/3S-D (Klima II)

$R_{w,P}$ 42 dB



RM/3SD-K3 (Klima III)

$R_{w,P}$ 42 dB



RV/K2-WK2 mit 3-fach Verriegelung

$R_{w,P}$ 42 dB