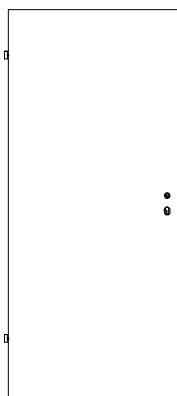
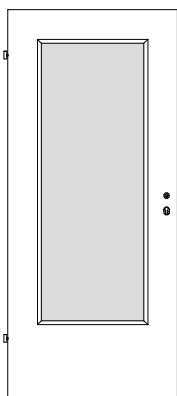




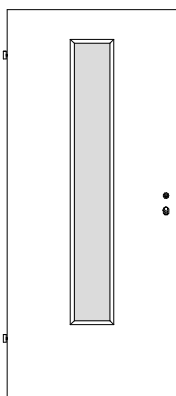
## Weißlack Norm- und Funktionstüren



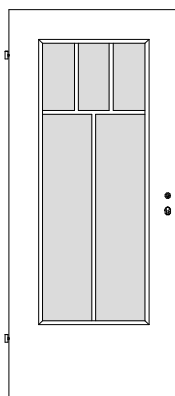
RW/01, RS/01



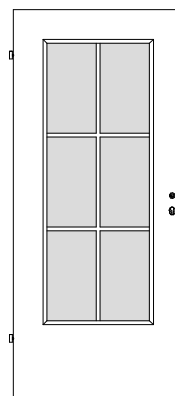
RS/LA 1



RS/LA 2



RS/SP5



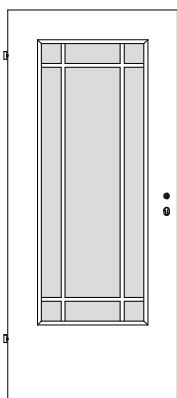
RS/SP6

Türstärke ca. 40/46mm,  
Aufbau 3- oder 5-fach,  
Mittellage siehe unten,  
Deck aus spezieller  
Hartfaserplatte

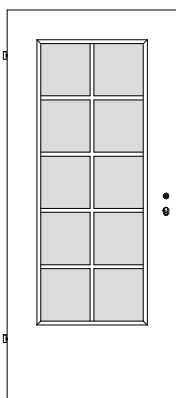
Oberfläche Weißlack

Schloss silberlack Stulp,  
Bänder V0020 vernickelt  
(Bänder V0026 WF ab  
Türmodell VS/01)

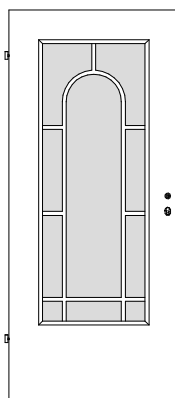
Schalldämmwert  $R_{w,P}$   
nach DIN 52210



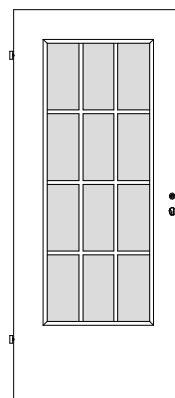
RS/SJ9



RS/SP10



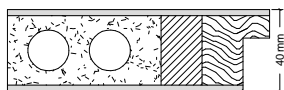
RS/SP10R



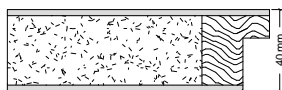
RS/SP12



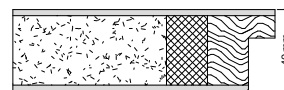
RW/01 (Klima I)



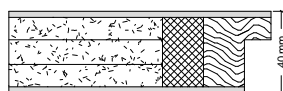
RS/01 (Klima I)  
 $R_{w,P}$  25 dB



VS/01 (Klima I)  
 $R_{w,P}$  32 dB



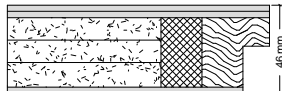
VS/1S (Klima II)  
 $R_{w,P}$  32 dB



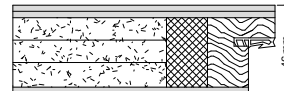
VS/3S (Klima II)  
 $R_{w,P}$  37 dB



VS/3S-K3 (Klima III)  
 $R_{w,P}$  37 dB



SH/3S (Klima II)  
 $R_{w,P}$  40 dB



SH/3S-D (Klima II)  
 $R_{w,P}$  40 dB



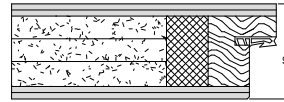
SH/3S-K3 (Klima III)  
 $R_{w,P}$  40 dB



SH/3SD-K3 (Klima III)  
 $R_{w,P}$  40 dB



SD/5S-K3 (Klima III)  
 $R_{w,P}$  42 dB



VS/K2-WK2 (Klima II)  
 $R_{w,P}$  40 dB  
mit 3-fach Verriegelung