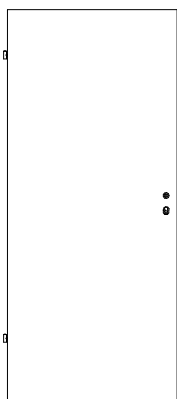
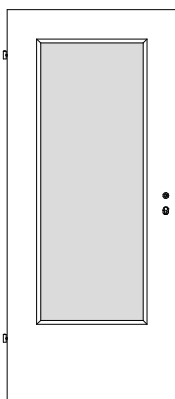




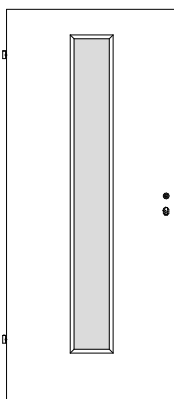
Weißlack Rundkanten-Türen RR



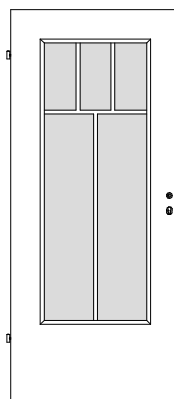
RR/01



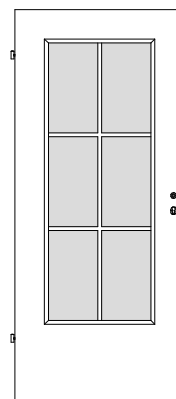
RR/01-LA 1



RR/01-LA 2



RR/01-SP5



RR/01-SP6

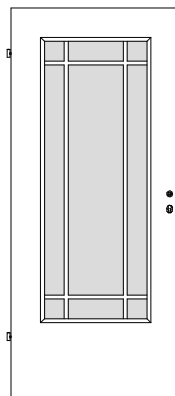
Türstärke ca. 40/46 mm,
Rahmen Massivholz bzw.
MDF mit Schlossverstärkung,
unten doppelter Rahmen

Mittellage siehe unten,
Deck aus Hartfaser
Überschlag *Rundkante*

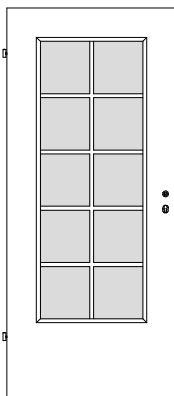
Oberfläche Weißlack

Marken-BB-Schloss mit
silberlack Stulp und Bänder
V0020 vernickelt
(bei Vollspan mit Bänder
V0026 WF vernickelt)

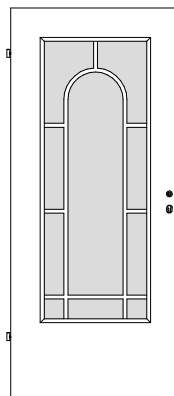
Schalldämmwert $R_{w,P}$
nach DIN 52210



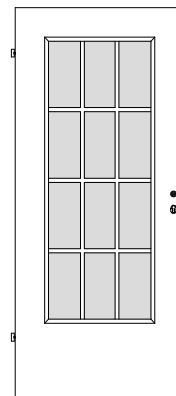
RR/01-SJ9



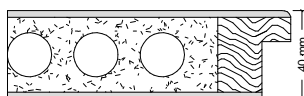
RR/01-SP10



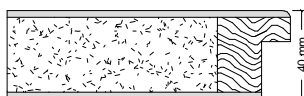
RR/01-SP10R



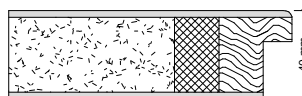
RR/01-SP12



RR/01
Klimakl. I



RV/01
Klimakl. I



RV/1S
Klimakl. II / SSK 1



RV/1S-K3
Klimakl. III / SSK 1



RV/3S
Klimakl. II / SSK 2



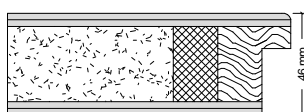
RV/3S-K3
Klimakl. III / SSK 2



RM/3S-D
Klimakl. II / SSK 2



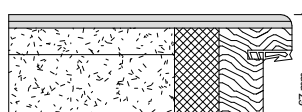
RM/3SD-K3
Klimakl. III / SSK 2



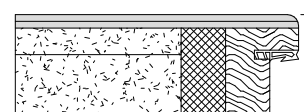
RV/K2-WK2
mit PZ-Schloss 65 mm Dorn
Klimakl. II / SSK 1



RV/K3-WK2
mit PZ-Schloss 65 mm Dorn
Klimakl. III / SSK 1



RM/VRS-K2, RS + 2xVS
Doppelfalz, PZ 65 mm Dorn
Klimakl. II / SSK 3



RM/VRS-K3, RS + 2xVS + Alu
Doppelfalz, PZ 65 mm Dorn
Klimakl. III / SSK 3