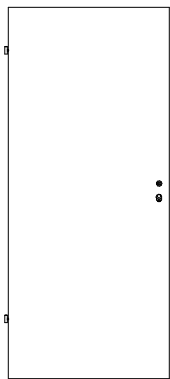
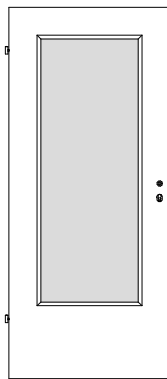




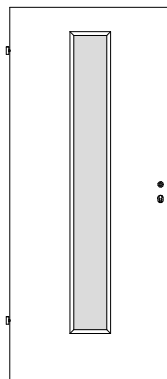
## Weißlack Norm- und Funktionstüren



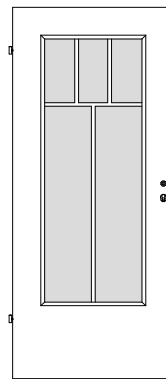
RW/01, RS/01



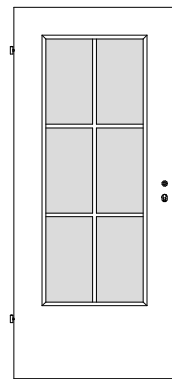
RS/01-LA 1



RS/01-LA 2



RS/01-SP5



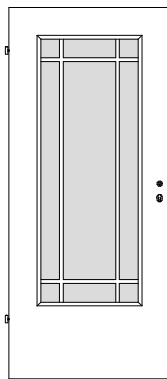
RS/01-SP6

Türstärke und Aufbau  
siehe Zeichnungen unten

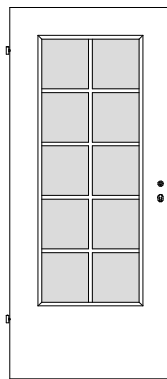
Oberfläche Weißlack

Schloss silberlack Stulp,  
Bänder V0020 vernickelt  
(Bänder V0026 WF ab  
Türmodell VS/01)

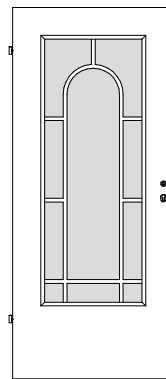
Schalldämmwert Rw,P nach  
DIN 52210



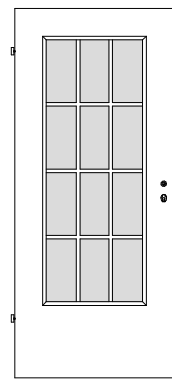
RS/01-SJ9



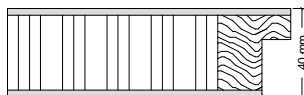
RS/01-SP10



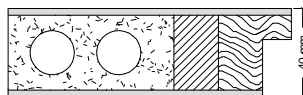
RS/01-SP10R



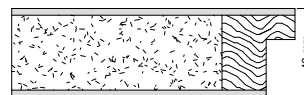
RS/01-SP12



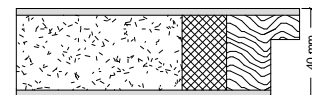
RW/01  
Klimakl. I



RS/01  
Klimakl. I



VS/01  
Klimakl. I



VS/1S  
Klimakl. II / SSK 1



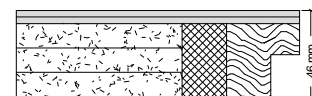
VS/1S-K3  
Klimakl. III / SSK 1



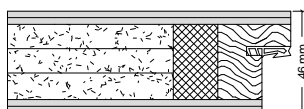
VS/3S  
Klimakl. II / SSK 2



VS/3S-K3  
Klimakl. III / SSK 2



SH/3S  
Klimakl. II / SSK 2



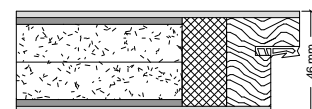
SH/3S-D  
Klimakl. II / SSK 2



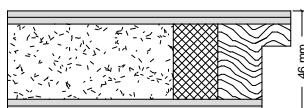
SH/3S-K3  
Klimakl. III / SSK 2



SH/3SD-K3  
Klimakl. III / SSK 2



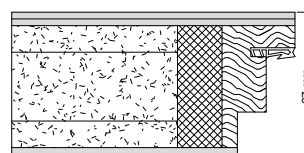
SD/2S-K2  
Klimakl. II / SSK 3



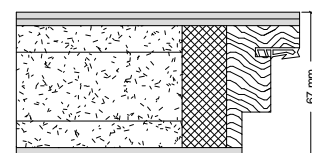
VS/K2-WK2  
mit PZ-Schloss 65 mm Dorn  
Klimakl. II / SSK 1



VS/K3-WK2  
mit PZ-Schloss 65 mm Dorn  
Klimakl. III / SSK 1



SD/VRs-K2, RS + 2xVS  
Doppelfalz, PZ 65 mm Dorn  
Klimakl. II / SSK 3



SD/VRs-K3, RS + 2xVS + Alu  
Doppelfalz, PZ 65 mm Dorn  
Klimakl. III / SSK 3